



Sports Medicine Facility

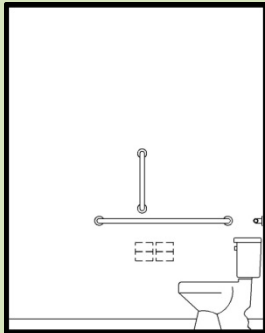


DESIGN AND FUNCTION



Tipton Lakes Health Center

RECENT CODE CHANGES and NEWS



An **18" fixed, vertical side wall grab bar** is mandatory for all ADA applications with the exception of sleeping and dwelling units. This requirement applies to most healthcare installations and complies with 2008 Indiana Accessibility Code.



New site! Cooler Design in conjunction with Kainos Design has created a new web site. Please visit us at www.coolerdesign.com

ASK US ABOUT THESE NEW AND CREATIVE PRODUCTS

Addressed to meet the needs of patients and caregivers, the **Nala** and **Centé** chairs from **Brandrud** are ergonomically designed. The Nala features a synchronous tilt that creates a controlled motion and relaxed feel. Fold-away arms allow caregivers to move patients easily in and out of the chair, while the open area directly beneath the chair allows patients to easily lift themselves from the seated position.



Nala Chair



Centé Chair

The Centé Chair is lightweight, mobile and exceptionally comfortable. Centé also features therapeutic surfaces, a shift-control mechanism for safe patient handling and permeable materials for air circulation.

We like both chairs for their comfort level and good looks!

Codelocks manufactures an electronic lock with keypad, thus allowing users simple access without the need for keys.

Cooler Design recently specified this lock for use on nurse server casework. Staff members have thoroughly enjoyed its ease of use!



RECENTLY COMPLETED PROJECTS

- 17,000 SF Medical Office Building - Columbus, IN
- PT, OT and Sports Medicine Facility - Bloomington, IN
- 12-Station Renal Dialysis Building - Peru, IN